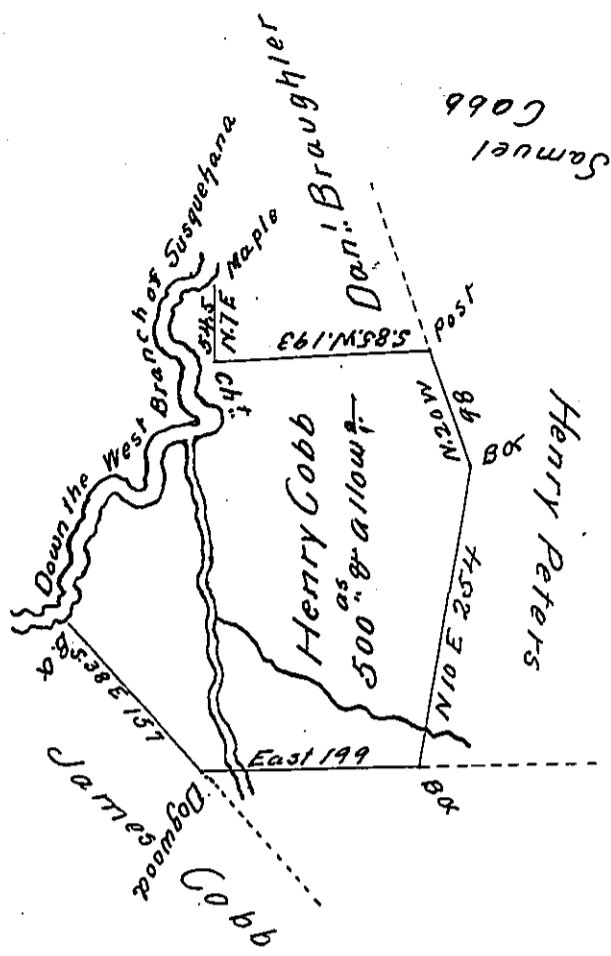


C-22 - 211



N 60 E	4
N 15 E	28
North	24
N 33 E	23
N 19 E	14
N 31 E	6
S 65 E	25.3
N 65 E	28
N 3 E	29
N 37 E	10
N 77 E	24
N 64 E	12
N 49 E	10
N 17 E	10
N 28 W	.6
N 77 W	.8
N 50 W	.7
N 15 W	13
N 5 E	15
N 12 W	.7
N 35 W	.8
N 55 W	.3
N 33 W	11
N 18 W	14
N 5 E	10
N 50 E	18
S 87 E	7
S 62 E	5 to Maple

Draught of a Tract of Land Situate in Burnside Township Clearfield County Containing Five Hundred Acres and the Usual Allowance of Six per Cent for Roads &c. Surveyed the 1st Day of October 1834 In Pursuance of a Warrant Granted to Henry Cobb Dated the 18th Day of December 1793 for 400 Acres

David Ferguson D.S.

*To Jacob Spangler Esq.
Surveyor General.*

IN TESTIMONY that the above is a copy of the original remaining on file in the Department of Internal Affairs of Pennsylvania, made conformably to an Act of Assembly approved the 16th day of February, 1833, I have hereunto set my Hand and caused the Seal of said Department to be affixed at Harrisburg, this twentieth day of May 1904

Geo. B. Ross
Secretary of Internal Affairs.